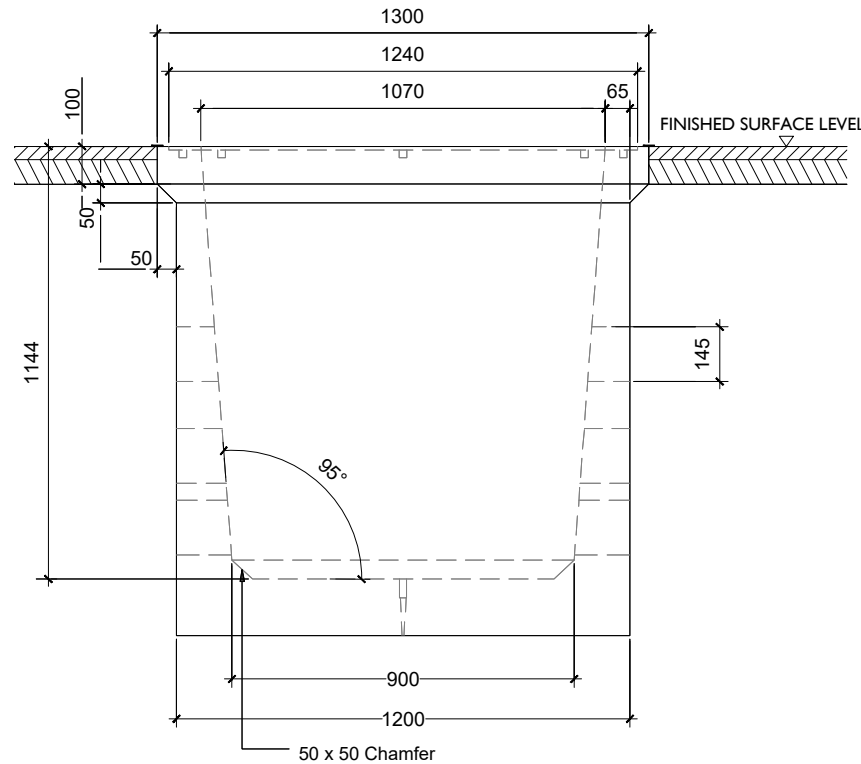


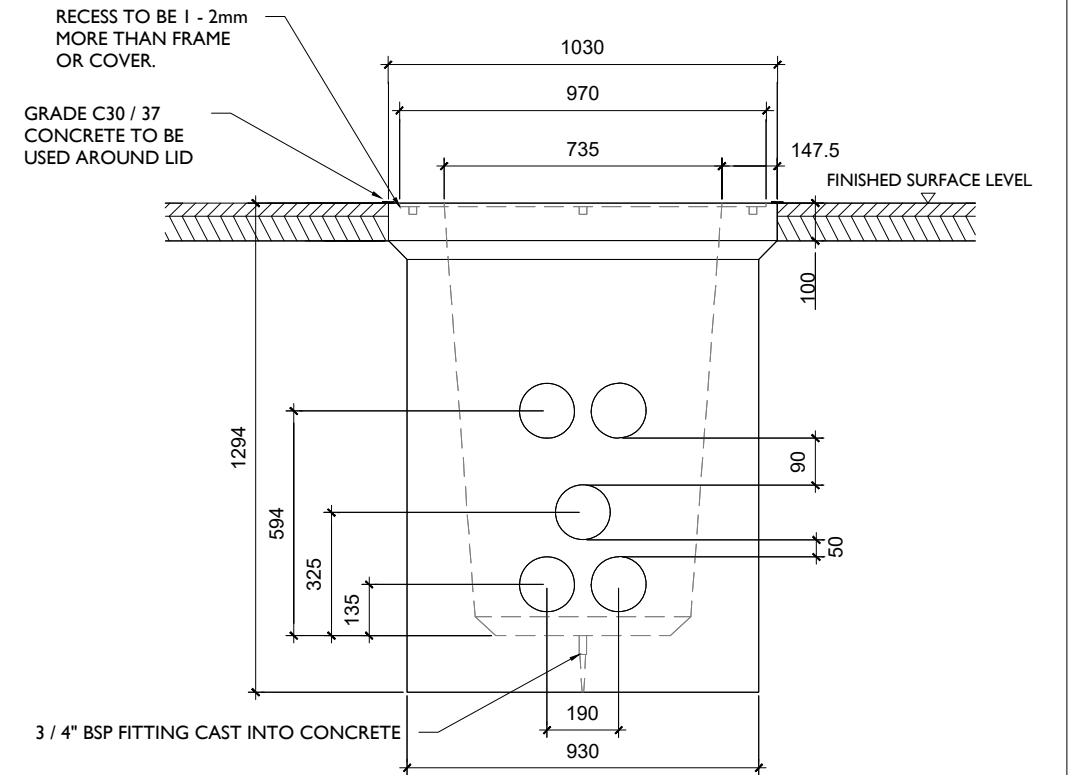
NOTES:

1. ALL DIMENSION IN MILLIMETERS UNLESS OTHERWISE STATED
2. REINSTATEMENTS TO COMPLY WITH REQUIREMENTS OF THE RELEVANT LOCAL AUTHORITY/ASSET OWNER
3. ENTRANCE AND EXIT DUCTS TO BE IN LINE
4. ALL MATERIALS AND WORKMANSHIP TO BE IN ACCORDANCE WITH NRA/T.I.I. SPECIFICATION FOR ROADWORKS, MAY 2005 & SUBSEQUENT REVISIONS
5. REINFORCED CONCRETE TO BE MINIMUM GRADE C32 / 40, SULPHATE RESISTING CEMENT TO BE USED WHERE AGGRESSIVE SOIL CONDITIONS APPLY, REFER TO TABLE 6.1 OF THE BRITISH STANDARD 8110.
6. CARRAIGWAY COVERS AND FRAMES TO BE TO B.S EN 124.
7. ALL COVERS SHALL HAVE "ESB" LOGO INCORPORATED IN THEM TO THE APPROVAL OF EIRGRID
8. STEP IRONS TO BE GOT DIPPED GALVANISED TO B.S 729 AND POSITIONED AS SHOWN ON ANY CHAMBER DEEPER THAN 700mm ON THE END REMOTE FROM ANY SIDE ENTRY DUCT.
9. CONCRETE PRECAST CHAMBER AND COVER TO BE TESTED THROUGH 5 POINTS, 40 TONNES VERTICAL STATIC LOADING TEST BY AN INDEPENDENT TEST COMPANY. IF REQUIRED, FURTHER DETAILS WILL BE PROVIDED BY EIRGRID.
10. FINAL POSITION OF C2 CHAMBERS SHALL BE AGREED WITH EIRGRID
11. IN A FOREST ENVIROMENT, BACKFILL WITH LEAN MIX OUTSIDE THE COVER FRAME WHERE THE ASPHALT IS SHOWN
12. THIS DRAWING HAS BEEN PREPARED TO INFORM AN ENVIRONMENTAL IMPACT ASSESSMENT FOR THE CASHLA PEAKER PLANT PROJECT AND IS FOR ILLUSTRATIVE PURPOSES ONLY. FINAL DETAILED DRAWINGS FOR THE PROPOSED 220KV GRID CONNECTION ROUTE AND 220KV SUBSTATION WILL BE SUBMITTED AS PART OF A S.182B PLANNING APPLICATION TO AN COIMISIÚN PLEANÁLA IN DUE COURSE.



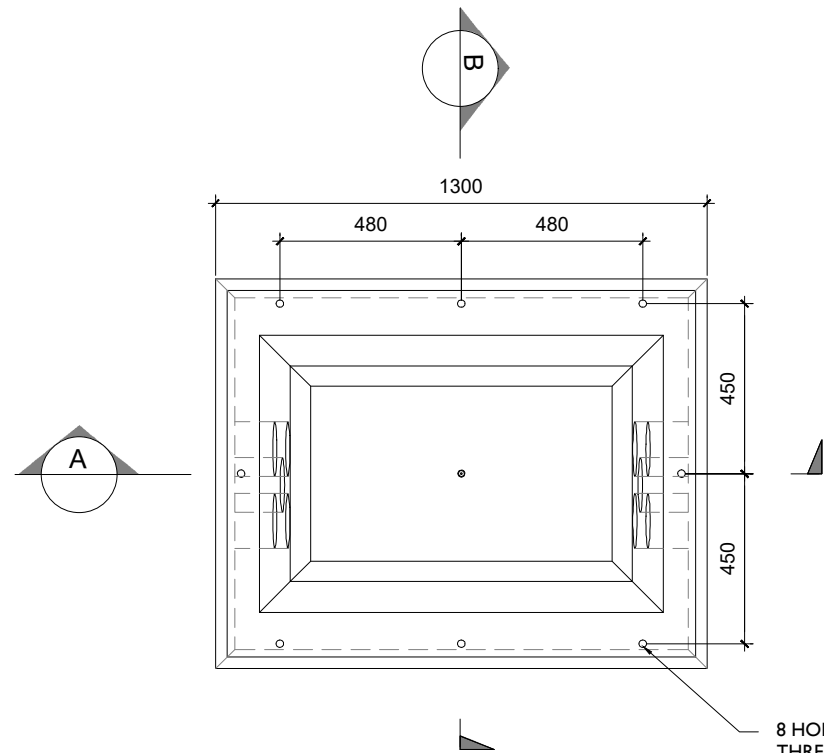
C2 Chamber Detail - Section A

SCALE 1:20



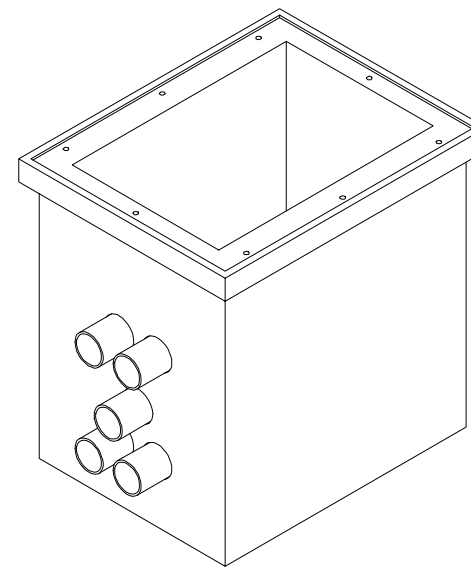
C2 Chamber Detail - Section B

SCALE 1:20



Plan of C2 Chamber

SCALE 1:20



Isometric : C2 Chamber Arrangement

SCALE 1:20

8 HOLES IN THE MOULD TO SUIT M20 THREADED INSERTS (PLEASE CHECK THE ALIGNMENT OF ALL HOLES)



Head Office
Beenreigh,
Abbeydorney,
Tralee, Co. Kerry
Ireland
Tel: 00353 66 7135710

CLIENT



PROJECT

Cashla Peaker Plant 220kV Grid
Connection and Substation

PROJECT NUMBER
300-101269

SHEET NUMBER
300101269-DR-134

SHEET TITLE

Communications
Chamber Details

DRAWING STATUS
For Planning

ISSUE/REVISION

I/R	DATE	DESCRIPTION
P3	13.03.26	Issued for Planning
P2	03.02.26	Issued for Information
P1	05.09.25	Issued for Planning
N1	03.06.25	Issued for Information